

**R/C MONOCOUE FOR SMALL FIELD FUN!**

(ISSN 0015-4849) 47506

MAY 1983

\$1.75

FLYING  
MODELS



# *flying* **models**



**R/C Boats  
Racing Cars**



***BARNSTORMING DELIGHT!***

***M.E.N.'S BIG JOHN BIPE***

**POWERED BY**

***FOX MFG.'S 1.2 C.I. TWIN***

***QUIET EXCITEMENT:***

***THE ELECTRIC METRICK***

- 3-VIEWS • REVIEWS
- COLUMNS • PLANS
- INDUSTRY NEWS







PHOTOGRAPHY: JIM MARTIN

## An FM Product Review

### MRC/Tamiya's

# Toyota 4 × 4

By Paul Martin

Off-road R/C fun featuring four wheel drive and scale looks.

**M**RC/Tamiya is marketing a 1/10 scale model of a Toyota four-wheel-drive pickup truck. Looking at this ten pound hulk, you can't help but be impressed. It will give you modelers some new thrills, I am sure.

The Toyota comes with a realistic six position transmission. It offers a four wheel-drive forward and reverse, a two wheel-drive low forward and reverse, and a two wheel high forward and reverse. This is operated by the throttle/rudder side of your transmitter. MRC/Tamiya supplies a shift guide plate for it which has three slots. The slot all the way to the right is for two wheel-drive high, the slot in the middle is for two wheel-drive low, and the slot all the way to the left is for four wheel-drive. Each of the three forward positions offer a range of speed settings from low to high. The wide variety of speeds (high and low) allows you to go just about anywhere. As a matter of fact, this pickup can take a 45° incline, with no problem and still has the speed when you hit level ground. Another nice feature about this 4 × 4 is that, while you are having fun driving through sand, mud, snow, etc., you can shift without stopping.

The battery pack that came with my product review truck lasts between 30 to 45 minutes per charge and can be re-charged by the supplied 16 hour slow charger or by an optional quick charger in about 15 to 30 minutes.

The tires are like the ones you would find on a real Toyota at your dealer's showroom. (But, you won't find these tires at your local tire dealer.) MRC/Tamiya mounts the 4 × 4's tires on a two piece rim, which are held together by six screws. Realistic looking hubs, held together by screws, cover the wheels. The suspension looks authentic, with stainless steel leaf springs.

Now to get the power to the ground. The drive train is made up of motor, transmission transfer case, two driveshafts, and two dif-

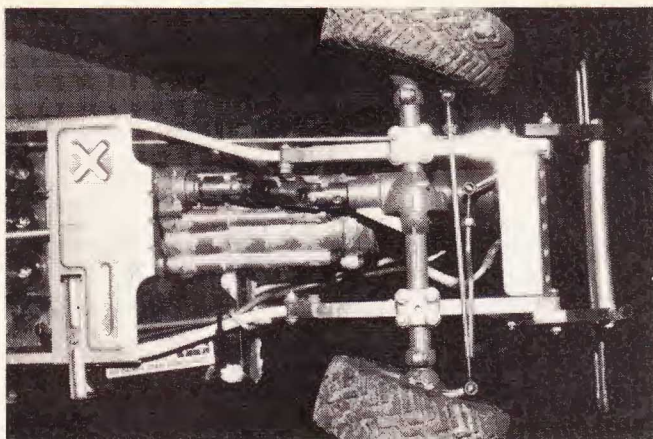
FLYING MODELS



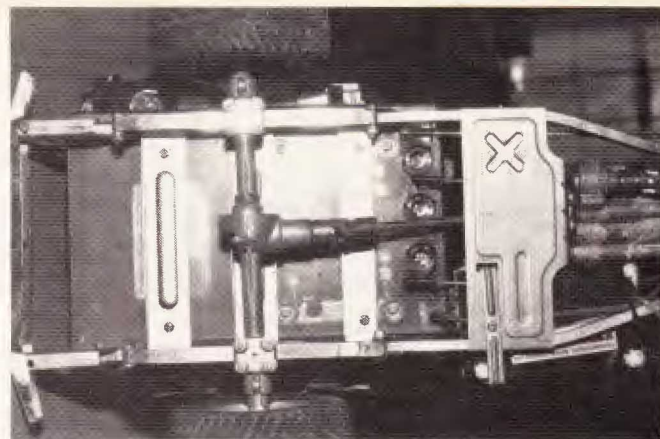
A look at the Toyota body for the MRC 4 × 4 and the MRC Vector 4 radio used for control. Note special shift plate supplied for transmission.

R/C racing cars

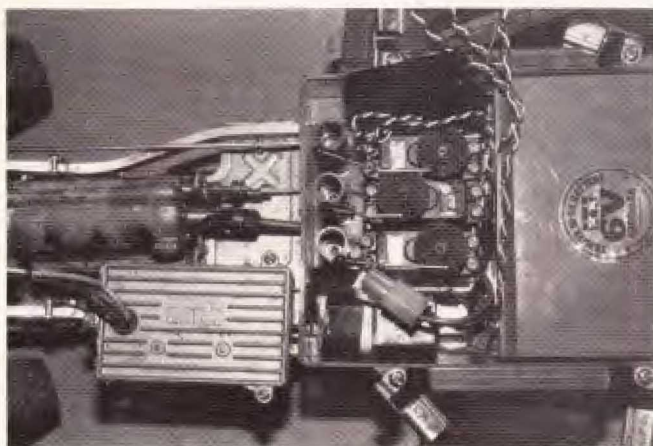




You can see the transmission transfer case, the double universal drive shaft, and front differential (above) in this shot of the front end. Radio compartment (below) is a sealed unit and has ample space.



The rear end of the 4 x 4 is much simpler (above) with a single universal on its drive shaft. Suspension for the car uses leaf springs. This view shows battery/radio compartment with speed control to the right.



The MRC Toyota 4x4 is rugged and dependable. For finish, author used Aero Gloss polyurethane and some of the many Mylar decals supplied.



ferentials. The driveshafts have two universals each, to compensate for the suspension travel and are held on with set screws. This rugged and durable 4 × 4 has all the fundamental characteristics you would find on a real Toyota.

Well, now to the construction. The kit comes complete, with a detailed instruction sheet and an illustration for each step. I found you can assemble the entire kit using only the illustrations. Ah! but first you will need some tools that MRC/Tamiya doesn't include (which aren't many because they did an excellent job of supplying almost everything you may need). Get ready a couple of screwdrivers and two pair of pliers (one needlenose, one regular), an X-acto knife and a pair of tweezers. Included in the kit is a tube of Japanese silicone adhesive, a tube of Loctite, a tube of grease, a special wrench, and a couple of allen wrenches. A tube of silicone seal is provided to seal the speed controller and transmission. This should not be done carelessly. I learned the hard way. I must have overlooked a spot and had moisture seep into my speed-controller, which caused me some problems. I had to disassemble the speed-controller and dry it out. I then resealed it carefully, and I haven't had any further problems. The transmission, which is a complex piece of equipment, comes factory assembled to eliminate any chance of error.

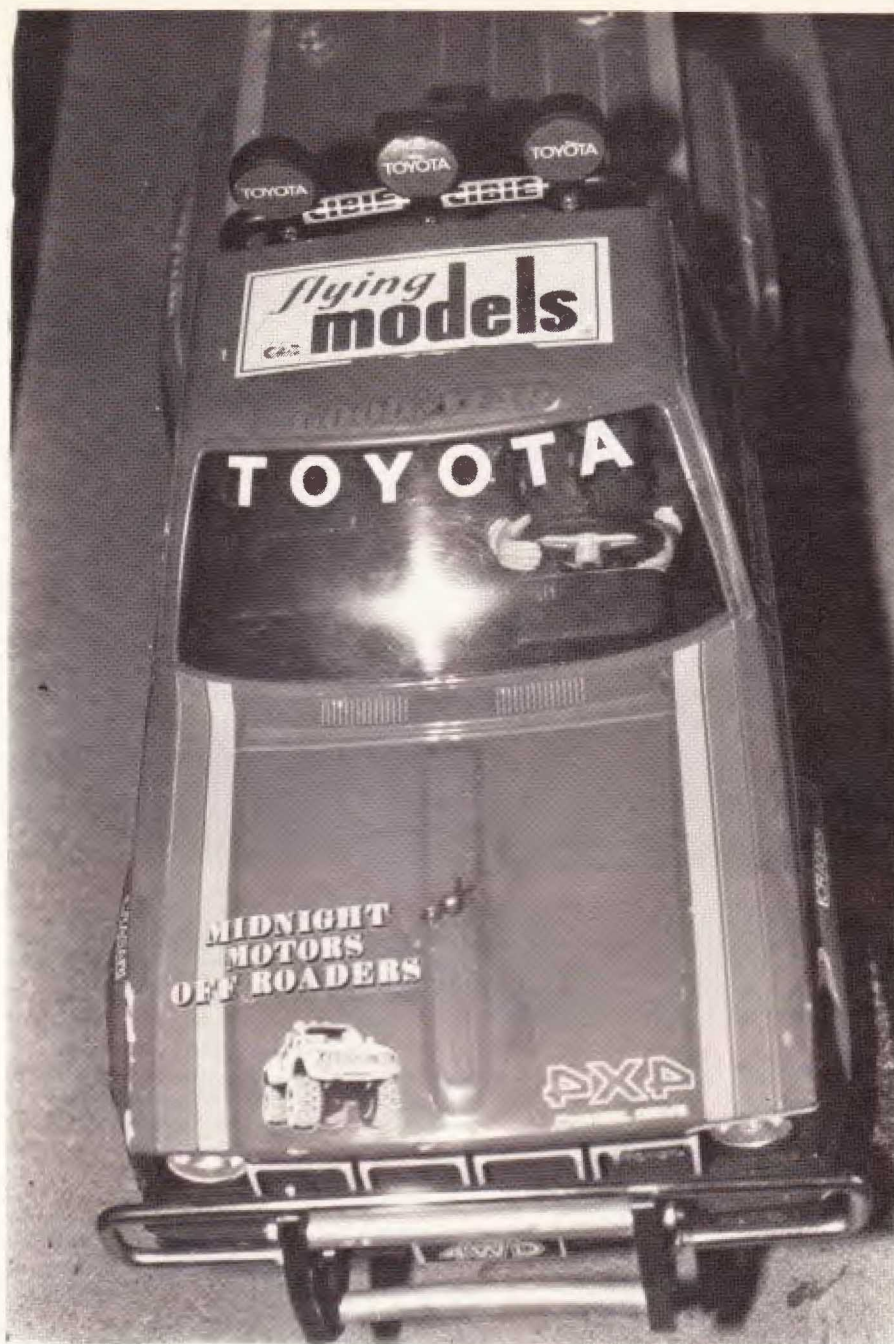
My choice of a radio was the MRC Vector 4, four channel radio, which comes complete with battery pack, charger, receiver, switch harness, mounting accessories and servos. This system has a lot of quality for the price, and I believe the performance is above the average car radio. The Vector 4 provided me with many flawless hours of enjoyment. The installation of the radio takes about two hours and all the linkage (bent as per instructions) works very smoothly. The servos, receiver, battery pack, and all wires are contained in a neat plastic box, which is semi-water tight and has four latches (two on each side) that secure the lid to the rest of the box. The on-off switch is also located on the lid and is covered by a rubber cap to help keep water, mud, etc. out. This box is located on the back of the truck and is covered by the bed of the 4 × 4.

The final step is to finish the body and accessories. The paint for this is not included in the kit. I used Aero Gloss Polyurethane for the body and Pactra touch-up paints for all accessories. There is a great variety of Mylar decals provided for your personal touch. Also included with the kit is a body and two heads. You can choose the head that fits the version of the 4 × 4 you build. To protect your vehicle, the kit comes complete with a metal bumper and a brush guard for the front end. If you just happen to flip your truck, there is a roll bar to protect the cab from any damage. MRC/Tamiya also has available an optional lighting system. The only thing left to do now is to charge it up and head for the hills or whatever else you can find to run this 4 × 4 through and enjoy the fun.

I just want to say, I have become accustomed to expect the highest quality from MRC/Tamiya, and the Toyota pickup is no exception. Its quality is not to be surpassed by any other kit I have ever assembled. It's really great.

For more information on the Toyota pickup and Vector 4 radio, contact: Model Rectifier Corporation, 2500 Woodbridge Avenue, Edison, NJ 08817.

FLYING MODELS



All-up weight of the pick-up is a hefty ten pounds in 1/10th scale (above). Almost all tools supplied. The four wheel drive offers a combination of forward and reverse speeds (below) to handle any terrain.





# Free AIR BRUSH Catalog

"America's most  
comprehensive  
mail order airbrush catalog."

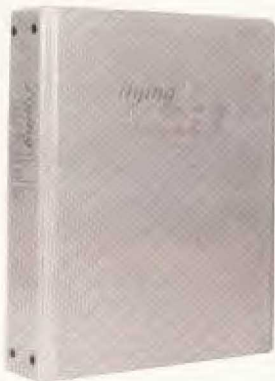
40 pages filled with the top names  
in airbrush and graphic arts: Efbe,  
Iwata, Paasche, T & C, Badger,  
Devilbiss, Binks, Versatex, Deka,  
Liquitex, Winsor-Newton, Marabu,  
Chartpak, Frisk, Rapidograph, and  
more. Complete supplies, parts and  
books for the professional, hobbyist  
and student. Save on special sets.  
Write or call now for free catalog!

## ARTISTIC AIRBRUSH

TOLL-FREE 800-547-9750 ext. 215

(Oregon, Alaska & Hawaii 503/224-3167)  
Dept. 215 P.O. BOX 3318 Portland, OR 97208

## FLYING MODELS BINDERS



### PRESERVE YOUR COLLECTION

Keep your FM collection neat, organized and  
safe. Handsome official blue binders stamped  
in gold hold 12 issues, open flat for reading, and  
are removable for shop work. Be sure to include  
your street address in addition to P.O. box num-  
ber for expedited delivery. NJ residents include  
state sales tax.

only  
**\$5.95**

add 75¢ postage & handling in USA,  
add \$1.25 postage & handling outside USA.

**CARSTENS PUBLICATIONS, INC.**  
Reader Service Dept. 4402  
P.O. Drawer 700  
Newton, New Jersey 07860

# Pit report

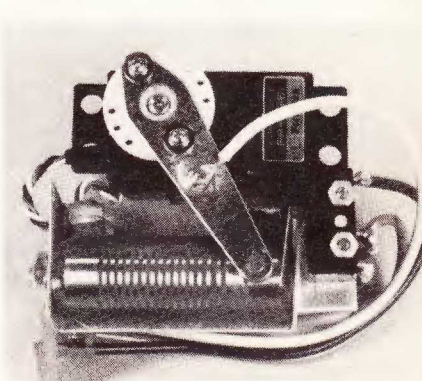


**ASSOCIATED ELECTRICS**, 1928 East  
Edinger, Santa Ana, CA 92705, has intro-  
duced their custom racing shock designed for  
all-out competition. This totally new design  
has no air in the oil chamber. The hardened  
and sealed shaft is supported and sealed on  
both ends and the entire unit has been used  
with success on cars that won three, 6 hour  
Enduros. The shocks come in sets of four in  
two versions. #5136 is a set of four in kit  
form for RC500, including all parts & instruc-  
tions for \$60.00. Custom Racing Shocks for  
1/10th off-road cars, #6150, come as a set of  
four, with instructions, for \$60.00. To place  
an order or get more information, contact As-  
sociated at the address above or call direct  
(714) 547-4986.

**BOLINK**, 429 Hosea Road, Lawrenceville,  
GA 30245, has introduced a 1/10th scale Cor-  
vette dirt track body for use with 1/10th  
scale cars. Included with the body is a draw-  
ing showing you how to make your own side  
dams and spoiler using BoLink's sheet plas-  
tic #BL-2727. The body comes clear or  
painted and is listed in their catalog as #BL-



2395. For additional information, or to order  
a catalog (\$2.00, refundable), contact BoLink  
at their address above.



**BOLINK**, 420 Hosea Road, Lawrenceville,  
GA 30245, is presently offering their Digger  
10 off-road speed control unit for use in all  
1/10th scale applications. It is variable speed

## THE RANCH PIT SHOP

## R/C HOBBIES & RACEWAY

1655 E. MISSION BLVD. POMONA, CA 91766

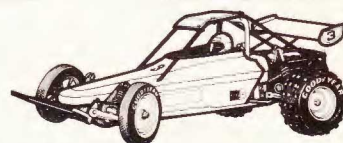
(714) 623-1506

The RANCH PITSHOP  
specializes in R/C Race  
Cars only... 1/8 · 1/10 · 1/12  
Scale Gas & Electric

*Parts and Cars in Stock*

COX  
TAMIYA  
ASSOCIATED  
DELTA  
THORP  
MRP  
BOLINK  
RANCH PIT SHOP  
KYOSHO  
RACE PREP

CRP  
RCH  
LEISURE  
PARMA  
K & B  
MRC  
McCOY  
ASTROFLITE  
FUTABA  
KRAFT



COX Scorpion,  
TAMIYA Rough Rider, Sand  
Scorcher, or F-150 Truck

**\$119.95**  
each



- WE SHIP MAIL ORDERS DAILY - C.O.D. OK
- MASTERCHARGE / VISA

• CALL US FOR SPECIAL PRICES AND ANSWERS TO YOUR RACING QUESTIONS. THE STAFF  
AT THE RANCH PITSHOP ARE RACERS THEMSELVES WHO KNOW AND USE THE PRODUCTS  
WEEKLY. WE HAVE OFF ROAD AND ROAD COURSE TRACKS...WEEKLY RACING SCHEDULE.



with a heavy duty resistor mounted on a bracket which mounts right to the servo. It also comes with a micro switch and is completely wired, ready to go. Order as #BL-4610 for \$24.95.

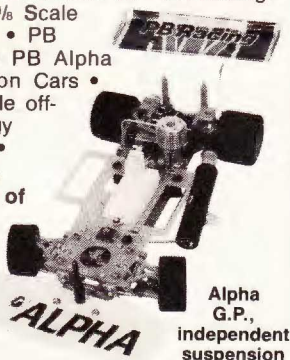


**CENTRAL BUILDERS, HOBBY DIVISION**, PO Box 152, Sunbury, PA 17801, now has available a new, two speed auto shift gearbox for all PB Alpha 1/8th scale cars. This unit features variable ratios and adjustable shift point. This gives more low speed power and no over revving at high speed. If you'd like more information about this Central Builder's product, contact them at their address above.

**VACO PRODUCTS, CO.**, 1510 Skokie Blvd., Northbrook, IL 60062, has introduced their 1983 New Products Catalog SD-284. It has 32 pages listing the over 150 new products introduced by Vaco in the last year. This catalog is free if you write or call Vaco, (312) 564-3300 at their address above.

## Central Builders hobby division

Importer & Distributor of: • PB Racing Products 1/8 Scale R/C Cars • PB Omega • PB Alpha Suspension Cars • PB 1/8 scale off-road buggy Mustang • Complete inventory of parts •



Distributor of:

- Parma and Twinn-K products •
- Please indicate which brochures.

**Central Builders/hobby division**  
P.O. Box 152, Sunbury, PA 17801  
phone 717-286-6461

## TORING T35 ROBUST AND HARDY GASPOWERED OFF-ROAD R C - BUGGY

Scale 1:8



GOLF-BODY IN LEXAN  
ABSOLUTELY RIGHT CENTRE OF GRAVITY  
OILBRONZEBEARING BETWEEN ALL METALPARTS  
NO SCREW-NUT DIFFICULT TO MANAGE  
CHAINDRIVE

SERVOSAFAER  
ALL HOLES ARE THREADED AND THE BEAMS ARE MILLED FOR EXACTLY INSTALLATION OF FRONT, GEARBOX AND QUICK-CHANGE ENGINE-MOUNT  
13 BALLBEARINGS  
SPIRALMILLING PINION IN GEARBOX

ANODIC ALUMINIUM  
TEFLONCLUTCH  
BUILT-IN DISKBRAKE  
QUICK-FILL FUEL TANK  
VERY EASY TO SERVICE  
PRICE less Engine and R C System. **\$ 369**

**DEEP VEE COMPETITION BOATS MADE IN HANDLAID FIBERGLASS WITH COLOURED GELCOTE SURFACE WITH A FINISH YOU HAVE NEVER SEEN BEFORE.**



### SCALE ACCESSORIES



TYPE	LENGTH	FOR ENGINE	PRICE
DACAPO 20	34"	19 - 40	\$ 79
	60	43"	\$ 97
	70	46"	\$ 104
	80	50"	\$ 114

**STRONG COMPETITIONRUDDER**  
6 BALLBEARINGS  
\$ 54.95

**FOR 5 MM SYSTEM DOUBLERUDDER**  
\$ 28.95

**STRUDDER**  
\$ 19.95

**TB3**

PLYWOODSLAB 1.95  
ENGINE MOUNT BRACKET 7.95  
STRUT WITH 5 mm BALLBEARINGS 9.95  
5 mm STEELSCHAFT 1.95  
RUDDER TYP 201 54.95  
DRIVE COUPLING 4.59  
DRIVE DOG 1.95  
PROPELLER 3BL 14.95

1.95 1.95  
7.95 7.95  
STRUT WITH 5 mm NEEDLEBEARINGS 4.75 4.75  
1.95 1.95  
RUDDER TYP 200 28.95 19.95  
4.59 4.59  
1.95 1.95  
2BL 11.95 11.95

**TEFLON THRUST WASHER** 59

TB1 98.24

TB2 64.63

TB3 55.63

**SALE \$ 88.99**

**SALE \$ 57.99**

**SALE \$ 49.99**

201

TB1



R/C COMPETITION MARBLEHEAD YACHT  
COMPLETE KIT EXCEPT RADIO AND SAIL-CONTROLEQUIPMENT

**SUPER-QUICK KIT  
ALMOST READY TO SAIL  
MADE OF HANDLAID FIBERGLASS  
ALUMINIUM SCALE PROFILE  
MAST READY-MADE SAILS  
LENGTH 50" BEAM 10" MAST 70"  
SAILAREA 5,55 SQUAREFEET**

WE HAVE A LOT OF EQUIPMENT FOR BOAT- AND OFF-ROAD RACING, SNOWMOBILE, ELECTRIC CAR, ENGINES. SEND \$ 1 FOR CATALOG.

## Toringe

TORINGE R/C  
P.O. BOX 828, NEWTON, NJ 07860